

Come What May

from Iced Earth - *The Crucible Of Man, Something Wicked, Part 2*

Written by Jon Schaffer

Intro
Moderate ♩ = 92

B5
***(E5) G
(C)

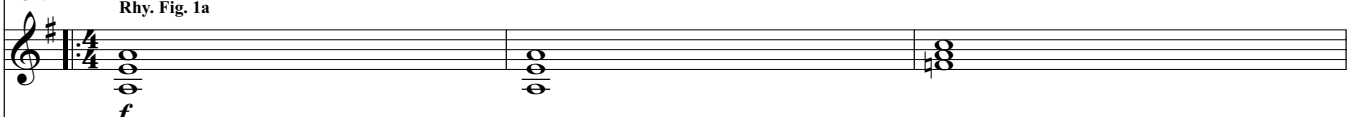
*Gtr. 1 Rhy. Fig. 1



f

T			
A			
B			
	7	9 7 10 9 5	7 9 7 10 9 5 8 9 7 10 9 7 0

*Gtr. 2 Rhy. Fig. 1a



f

T			
A			
B			
	5 0	5 0	5 0

*Gtrs. 1 & 2 (baritones) tune down 1/2 step: (low to high) B \flat -E \flat -A \flat -D \flat -F-B \flat
w/ dist., doubled throughout

*Chord names in () represent chords respective to baritone guitars.
Chord symbols above represent actual sounding chords.
Actual recording sounds 1/2 step lower than written.

Verse

E5 B5
(A5) (E5)

As I

End Rhy. Fig. 1 Rhy. Fig. 2

P.M. -----

	5	7	5	4	5 4	5	7	7	7	7	9	9	9	9	7	7	7	7	10	10	10	10	9	9	10	10
--	---	---	---	---	-----	---	---	---	---	---	---	---	---	---	---	---	---	---	----	----	----	----	---	---	----	----

End Rhy. Fig. 1a Rhy. Fig. 2a

T		
A		
B		
	5 0	5 0

G
(C)

watch through the a - ges and

P.M. -----

7 7 7 7 9 9 9 9 7 7 7 7 10 10 10 10 9 9 10 10 8 8 8 8 9 9 9 9 7 7 7 7 10 10 10 10 9 9 7 0

Gtr. 1: w/ Rhy. Fig. 2 (2 times)
Gtr. 2: w/ Rhy. Fig. 2a (2 times)

E5
(A5) B5
(E5)

gaze up - on this world. The

P.M. -----

End Rhy. Fig. 2

5 5 5 5 7 7 7 7 5 5 5 5 4 4 4 4 5 4 5 0

End Rhy. Fig. 2a

G
(C) E5
(A5)

trou - bled race of man so im - pe - tu - ous and a -

B5 (E5) G (C)

fraid. There's po - ten - tial in this race a

Gtr. 1: w/ Rhy. Fig. 2

E5 (A5) B5 (E5)

man can spark hope. But in masse they do re - gress

Gtr. 2
Rhy. Fig. 2b

Diagram showing guitar rhythm with chords: G (0 2 3) and B5 (2 4 5).

G (C) E5 (A5) B5 (E5)

a con - stant down - ward slope!

End Rhy. Fig. 2b

Diagram showing guitar rhythm with chords: G (0 2 3), E5 (2 4 5), and B5 (2 4 5).

Pre-Chorus

B5 A5 B5 A5 B5 A5 B5 A5 B5 D5 E5 D5 C5 D5 C5
 (E5) (D5)(E5) (D5)(E5) (D5)(E5) (D5)(E5) (G5) (A5)(G5)(F5) (G5)(F5)

Gtr. 2
Rhy. Fig. 3

Diagram showing guitar rhythm with chords: G (0 2 3), E5 (2 4 5), B5 (2 4 5), D5 (2 4 5), and C5 (3 5 7). Includes 'P.M.' markings.

B5 A5 B5 A5 B5
(E5) (D5) (E5) (D5) (E5)

Gtr. 1: w/ Rhy. Fig. 3

End Rhy. Fig. 3

P.M.

4

4

9 7 9 7 9 (9) 2 2
7 5 7 5 7 0 0

Verse

Gtr. 1: w/ Rhy. Fig. 2 (3 times)
Gtr. 2: w/ Rhy. Fig. 2a (3 times)

B5 G
(E5) (C)

How have they come _____ so _____ far yet have

E5 B5
(A5) (E5)

so _____ far _____ to _____ go? _____ It seems e - vo - lu - tion stalled

G E5 B5
(C) (A5) (E5)

_____ on the na - ture _____ of _____ a man. From

G E5
(C) (A5)

liv - ing _____ in caves _____ to manned _____ flights _____ in space.

Gtr. 1: w/ Rhy. Fig. 2
Gtr. 2: w/ Rhy. Fig. 2b

B5 G
(E5) (C)

_____ And for all that _____ is worth _____ still a

Pre-Chorus

Gtr. 1: w/ Rhy. Fig. 3 (2 times)

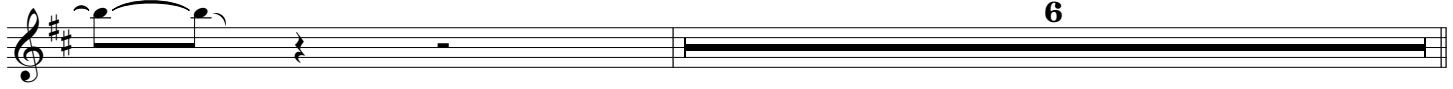
B5 A5 B5 A5 B5
(E5) (D5)(E5) (D5)(E5)

E5
(A5)

sad _____ pa - the - tic _____ race! _____

B5 A5 B5 A5 B5
(E5) (D5) (E5) (D5)(E5)

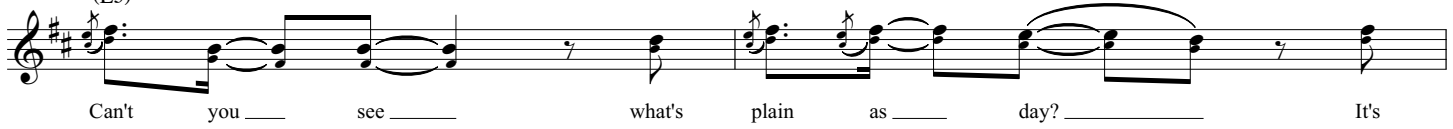
6



Chorus

Gr. 1: w/ Rhy. Fig. 1 (2 times)
Gr. 2: w/ Rhy. Fig. 1a (2 times)

B5
(E5)



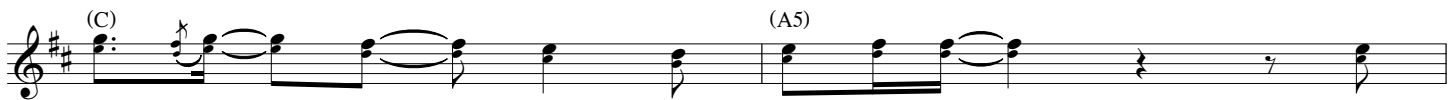
Can't you see what's plain as day? It's

G

(C)

E5

(A5)



al - ways been there in - side of you. One

B5

(E5)



sav - ing grace that's hard to face. Em -

G

(C)

E5

(A5)



brac - ing the truth will change your fate. It's

B5

(E5)



up to you and the path you choose to be

G

(C)

E5

(A5)



led to the slaugh - ter or lead the way. The

B5

(E5)



quest for light a worth - while fight. Will you

G (C) E5 (A5) B5 (E5)

have what _ it takes _____ come what _ may? _

Gtr. 2

Bridge

B5 (E5)

Gtr. 1 Riff A End Riff A

P.M. -----|

9 11 12 10 12 11 12 11 9 12 9 11 12 11 9 12 9 11 12 11 9 12 9 11 12 11 9 12

Gtr. 2

Gtr. 1: w/ Riff A (8 times) Gtr. 2 tacet A5 (D5)

*Gtr. 3

mf let ring -----| let ring -----|

7 9 9 9 7 9 7 9 9 5 7 7 7 5 7 5 7 7

Gtr. 2

*Gtr. 3 (baritone) tune down 1/2 step: (low to high) Bb-Eb-Ab-Db-F-Bb w/ clean tone

G5 (C5) F#5 (B5) D (G) N.C.

let ring ----- | let ring ----- | let ring ----- |

3 5 5 5 3 5 | 3 5 5 | 2 4 4 4 2 4 | 3 2 0 2 3 2

B5 (E5) A5 (D5)

Rhy. Fig. 4

let ring ----- | let ring ----- |

0 7 9 9 7 9 | 7 9 9 | 5 7 7 7 5 7 | 5 7 7

G5 (C5) F#5 (B5) D (G) N.C. End Rhy. Fig. 4

let ring ----- | let ring ----- | let ring ----- |

3 5 5 5 3 5 | 3 5 5 | 2 4 4 4 2 4 | 3 2 0 2 3 2

Interlude

Gtr. 3: w/ Rhy. Fig. 4 (2 times)
B5

Gtr. 1 (E5)

Gtr. 1 tacet **14**

14

9

Gtr. 3 B5 (E5) Gtr. 3 tacet Gtr. 1

let ring ----- | P.M. ----- |

0 7 9 9 7 9 | 7 9 9 | 2/0 2/0 2/0 2/0 2/0 2/0 2/0 2/0

Verse

B5
(E5)

C#5
(F#5)

D5
(G5)

C#5
(F#5)

A5
(D5)

If you'd just look, look in - side your - selves.

*Gtr. 4

Gtr. 1

P.M. ---|

*Gtr. 4 (standard) tune down 1/2 step: (low to high) E♭-A♭-D♭-G♭-B♭-E♭ w/ dist

C#5
(F#5)

D5
(G5)

C#5
(F#5)

G5
(C5)

B5
(E5)

You'll find the an - swers to your

Gtr. 1

P.M. ---|

A5 (D5) G5 (C5) A5 (D5)

D5 (G5) C#5 (F#5) B5 (E5)

A/E (D/A) B5 (E5)

pain. _____ The hard - est road _____

_____ The hard - est

(10) 12 12 10 9 10 10 (10) 12 12 14 15

Rhy. Fig. 5

P.M. --|

7 5 7 5 0 0 5 4 2 2 0 0 2 0

C#5 (F#5) D5 (G5) C#5 (F#5)

A5 (D5)

C#5 (F#5) D5 (G5)

_____ to en - ligh - ten - ment _____ Pre - sents a

road.

Sua -----

17 17 (17) 14 14 15 17 21

P.M. --| P.M. --|

(2/5/6) 0 0 4 4 5 4 4 7 7 5 5 0 0 4 4 5 5

C#5 (F#5) G5 (C5) B5 (E5) A5 (D5) G5 (C5) A5 (D5)

con - stant test _____ of your re - solve. _____

8va

1/2 1/2

(21) (21) 21 21 19 19 21 20 (20) 21 21 19

P.M. -- 1

4 5 5
4 3 3
2

0 0 3 9 7 5 5 7
3 7 5 3 5

Gtr. 2: w/ Rhy. Fig. 5

D5 (G5) C#5 (F#5) B5 (E5) A/E (D/A) B5 (E5) C#5 (F#5) D5 (G5)

Time _____ for you, _____ is

_____ Time for you. _____

Gtr. 4

8va

19 21 22 17 17 14 17 15 17 (17) 15

Gtr. 2 End Rhy. Fig. 5 Gtr. 1

P.M. -- 1 P.M. --

(7/7) 0 0 3 4 4 0 0 0 0 0 0 0 0 0 0 0 0 0 0 0 2 2 2 3 3 3

C#5 (F#5) A5 (D5) C#5 (F#5) D5 (G5) C#5 (F#5) G5 (C5)

run - ning out. _____ The hu - man race _____

8va

17 (17) 17 22 17 21 17 19 21 19 17 19 17 (17) 22 22

P.M.

2 2 2 2 5 5 5 5 5 5 5 5 5 5 5 5 0 0 2 2 2 3 3 3 2 2 2 2 3 3 3 3 3 3 3 3

B5 (E5) A5 (D5) G5 (C5) A5 (D5) D5 (G5) C#5 (F#5)

_____ must e - volve. _____ Must e -

8va

21 22 20 (20) 22 22 21 22 22 22 22 22

P.M.

3 3 3 3 0 0 3 3 3 7 7 7 5 5 5 5 3 5 5 5 5 5 5 5 5 5 5 5 0 0 3 3 3 2 2 2

Out Chorus

Gtr. 1: w/ Rhy. Fig. 1 (2 times)
Gtr. 2: w/ Rhy. Fig. 1a (2 times)

B5
(E5)

volve.
Can't you see what's plain as day? It's

Gtr. 4

Gtr. 4 tacet

G

E5

(C)

(A5)

al - ways been there in - side of you. One

B5

(E5)

sav - ing grace that's hard to face. Em -

G

E5

(C)

(A5)

brac - ing the truth will change your fate. It's

B5

(E5)

up to you and the path you choose to be

G

E5

(C)

(A5)

led to the slaugh - ter or lead the way. The

B5
(E5)

quest for light a worth-while fight. Will you

G (C) E5 (A5)

Come what have what it takes come what may?

B5 (E5)

may! Can't you see what's plain as day? It's

Gtr. 4 *8va*

Gtr. 4 tacet G (C) E5 (A5)

al-ways been there in-side of you. One

B5 (E5)

As I watch through the a-sav-ing grace that's hard to face. Em-

G (C) E5 (A5)

- ges. _____ The trou - bled race _____ of man. _____

brac - ing _____ the truth will change your fate. _____ It's

B5 (E5)

_____ Seems e - vo - lu - tion's stalled. _____

up to _____ you _____ and the path you _____ choose _____ to be

G (C) E5 (A5)

_____ Still a sad _____ pa - the - tic race. _____

led to _____ the slaugh - ter _____ or lead the way. _____ The

B5 (E5)

_____ Will you have _____ what _____ it takes _____

quest for _____ light _____ a worth - while _____ fight. _____ Will you

G (C) E5 (A5)

_____ come what _____ may? _____

have what _____ it takes _____ come what _____ may? _____